

Apply continuous 6mm bead of Seal n Flex® -1 or Sikaflex® 11FC adhesive sealant

70 x 19mm Hardie™ CLD™ Structural Cavity Batten

Selected coating

Axon™ Panel

Proprietary tape or alternatively additional layer of flexible underlay over head flashing

65 x 2.8mm RounDrive ring shank nails for batten fixing

One piece head flashing

C - 25mm 'T' head stainless steel brad nails for panel fixing

Hardie™ uPVC vent strip

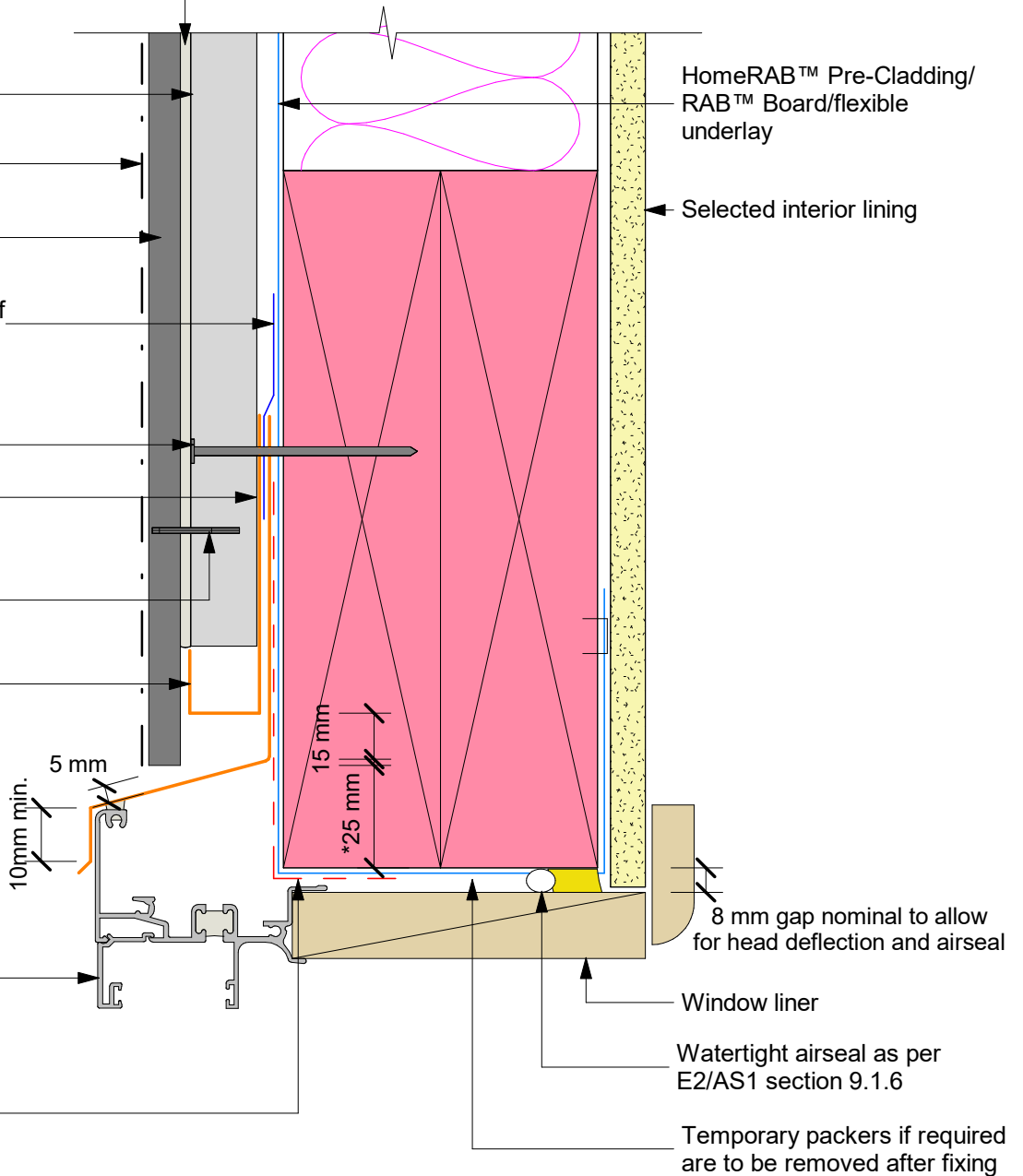
Stop end to head flashing behind the cladding or butt the ends against CLD™ Structural Cavity Batten and seal the joint

Window frame (refer to window manufacturer for method of support and fixing)

Flashing tape over flexible underlay required in corners only

HomeRAB™ Pre-Cladding/RAB™ Board/flexible underlay

Selected interior lining



Note:

- \* When HomeRAB™ Pre-Cladding/RAB™ Board is used flashing tape to be applied to the entire window opening.
- \* Also refer to Figure 116 NZBC clause E2/AS1 for head and jamb details
- \* Sealant must be applied between head flashing and window flange VH and EH wind zones and SED wind pressures