

Window frame (refer to window manufacturer for method of support and fixing)

Edge of panel and vertical section under window flange to be sealed before window is installed.

Window support as supplied by window manufacturer

10 mm min.
5 mm gap

Selected coating

65 x 2.8mm RounDrive ring shank nails for batten fixing

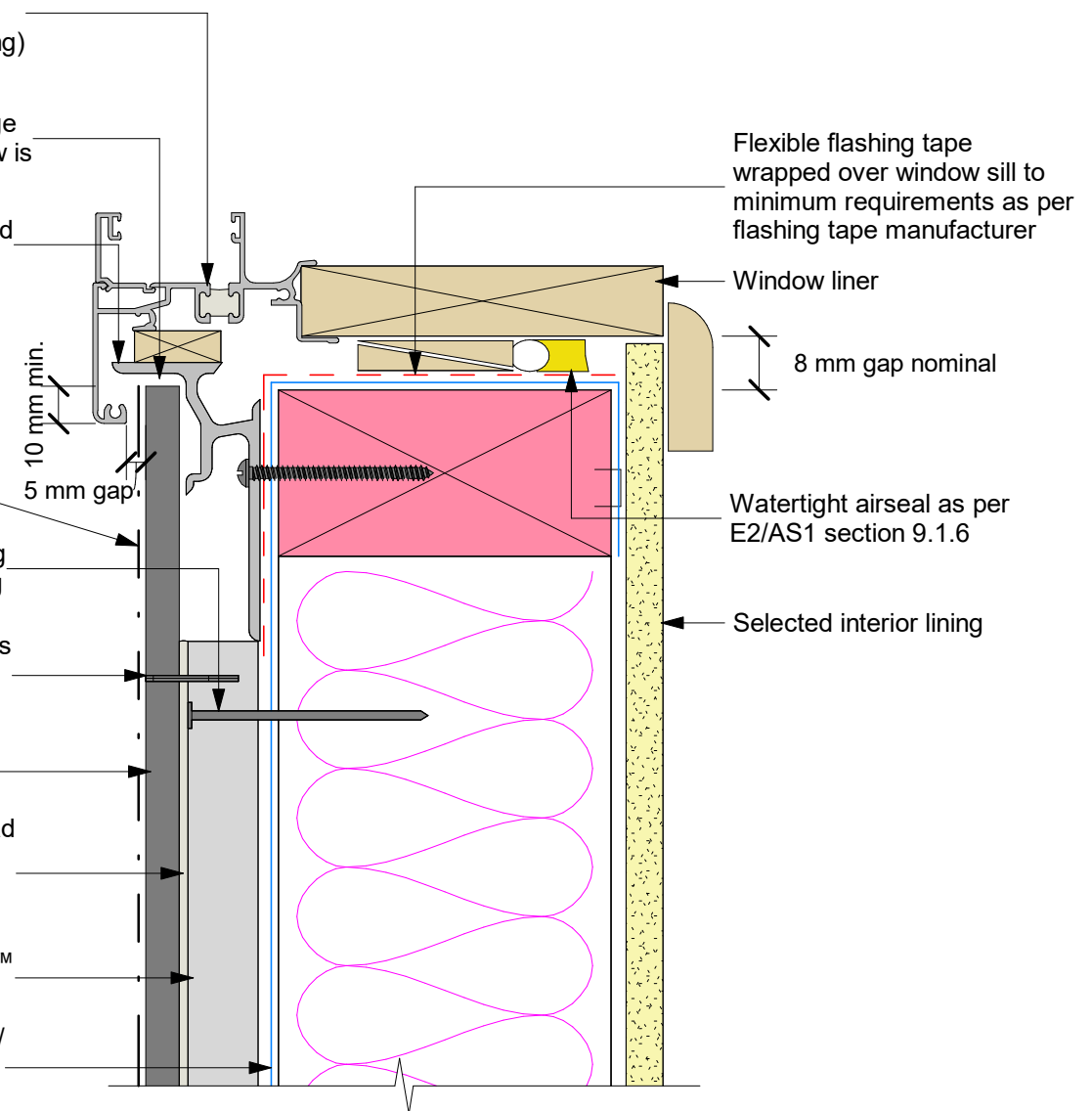
C - 25mm 'T' head stainless steel brad nails for panel fixing

Axon™ Panel

Apply continuous 6mm bead of Seal n Flex® -1 or Sikaflex® 11FC adhesive sealant

70 x 19mm Hardie™ CLD™ Structural Cavity Batten

HomeRAB™ Pre-Cladding/RAB™ Board/flexible underlay



Flexible flashing tape wrapped over window sill to minimum requirements as per flashing tape manufacturer

Window liner

8 mm gap nominal

Watertight airseal as per E2/AS1 section 9.1.6

Selected interior lining

General notes for materials selection

- * Flexible underlay must comply with acceptable solution E2/AS1.
- * Flashing tape must have proven compatibility with the selected flexible underlay and other materials with which it comes into contact.

Refer to the manufacturer or supplier for technical information for these materials.