

Window frame (refer to window manufacturer for method of support and fixing)

Edge of panel and vertical section under window flange to be sealed before window is installed.

Flexible flashing tape wrapped over window sill to minimum requirements as per flashing tape manufacturer

Window liner

8 mm gap nominal

Watertight airseal as per E2/AS1 section 9.1.6

Selected interior lining

35 mm min. cover

10 mm min.

5 mm gap

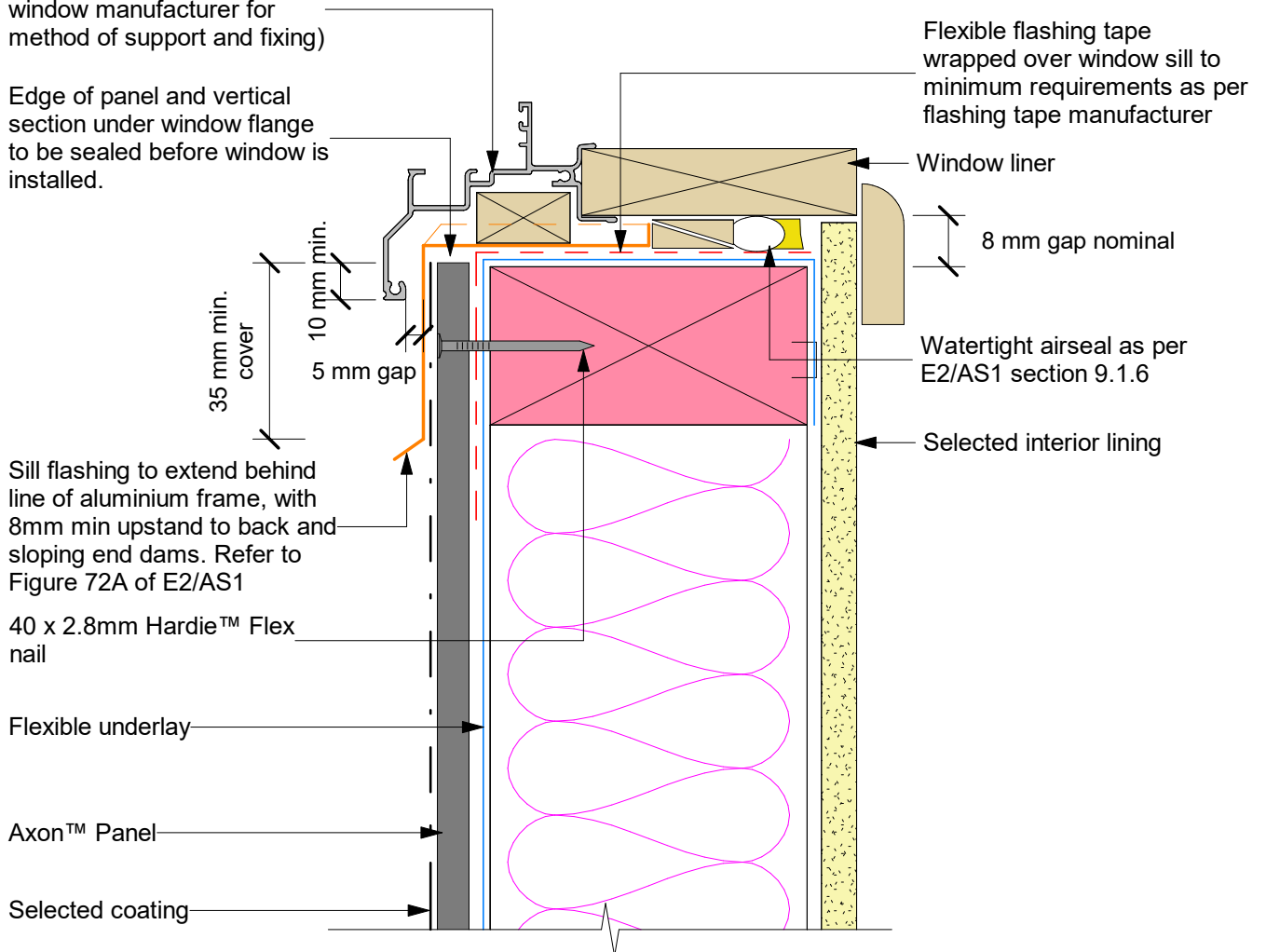
Sill flashing to extend behind line of aluminium frame, with 8mm min upstand to back and sloping end dams. Refer to Figure 72A of E2/AS1

40 x 2.8mm Hardie™ Flex nail

Flexible underlay

Axon™ Panel

Selected coating



General notes for materials selection

- * Flashing materials must be selected based on environmental exposure, refer to the NZS 3604 and Table 20 of the NZBC E2/AS1.
- * Flexible underlay must comply with acceptable solution E2/AS.
- * Flashing tape must have proven compatibility with the selected flexible underlay and other materials with which it comes into contact.

Refer to the manufacturer or supplier for technical information for these materials.