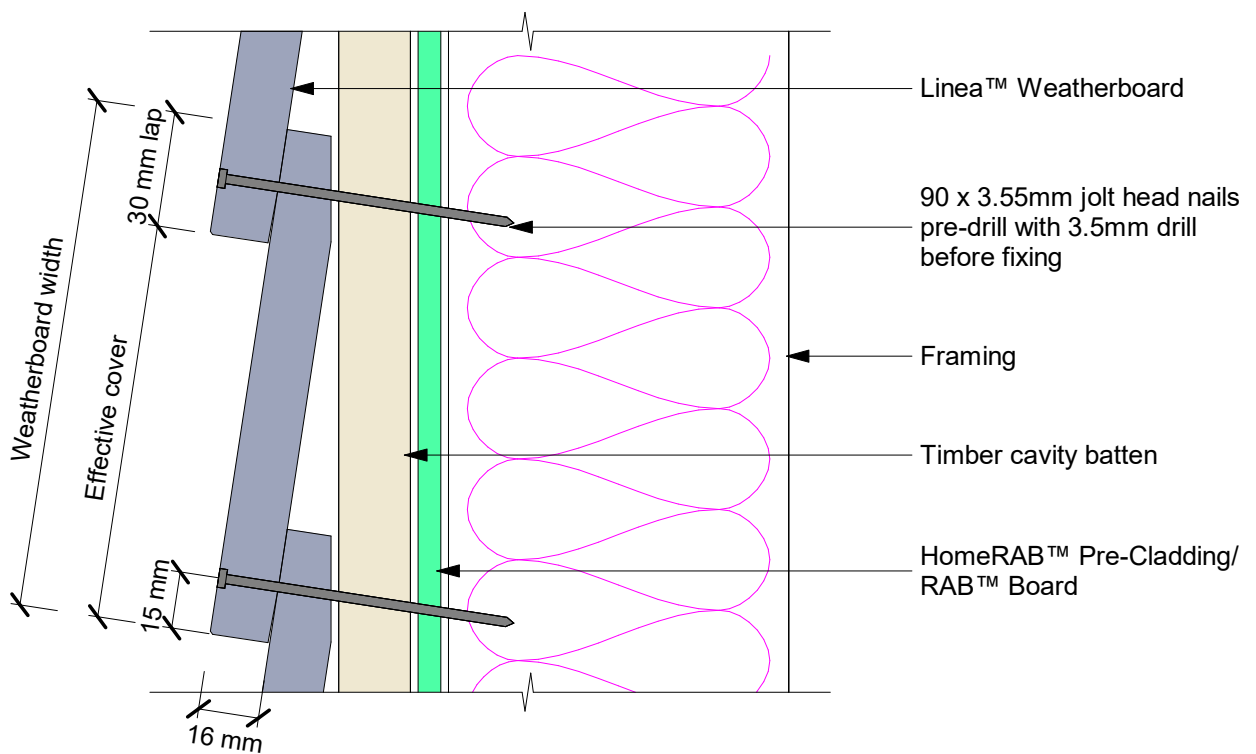


### Concealed Nailing

Linea™ Weatherboards must be face fixed at corners and down window and door openings using jolt head nails at 90° to face, punch 2mm below surface and fill. Refer to fixing table 4

In EH wind zone and SED projects Linea™ Weatherboards must be face fixed with 90 x 3.55mm jolt head nails. Refer to fixing table 4



### Face/Exposed Nailing