

75 x 3.06mm D head or 75 x 3.15mm RoundDrive ring shank nails

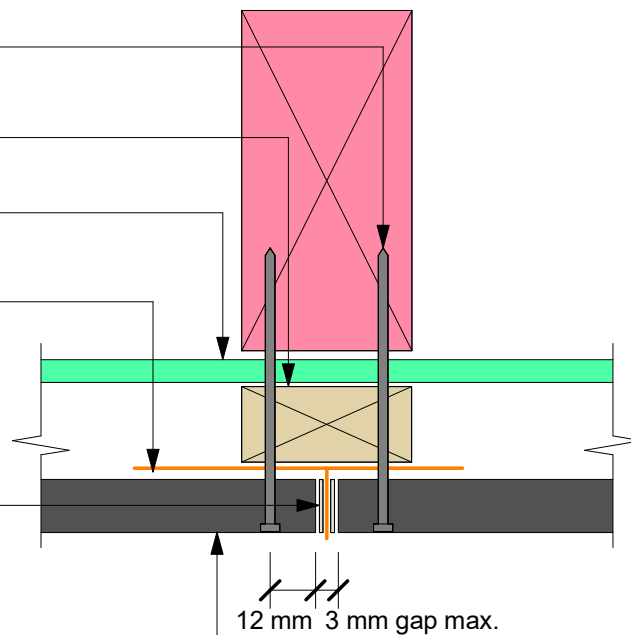
Timber cavity batten

HomeRAB™ Pre-Cladding/
RAB™ Board

Hardie™ 14mm trimline joint flashing

Apply 4mm continuous bead of flexible sealant to end of Oblique™ Weatherboard prior to butting to trimline joint

Oblique™ Weatherboard with selected coating



Note: Site cut edges to be primed