

65 x 2.87mm D Head or 65 x 2.87mm RoundDrive ring shank nails or 75 x 3.15mm Hardie™ Flex nail

Hardie™ horizontal cavity batten

Vertical timber cavity batten to support Hardie™ 14mm trimline joint flashing. Maximum 400mm centres

Panel edge to be sealed prior to flashing installation

Hardie™ 14mm trimline joint flashing

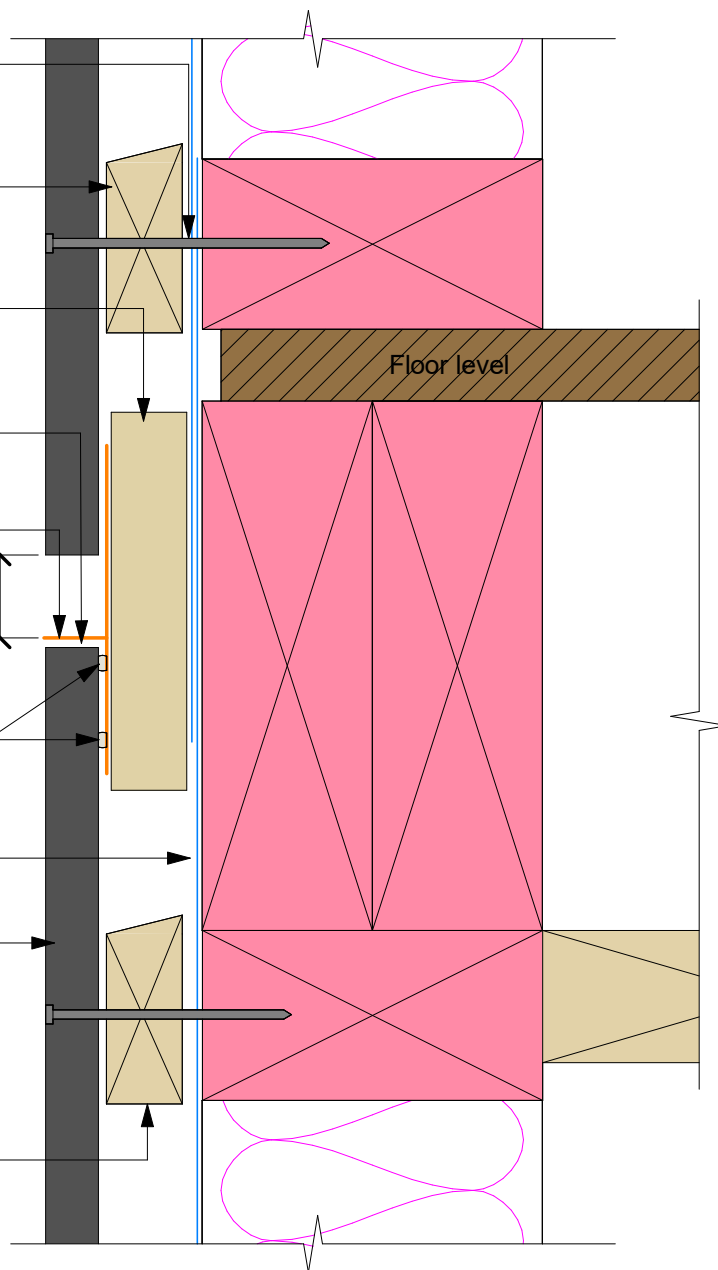
15mm gap

Apply two 6mm thick lines of adhesive sealant on the bottom portion of the Hardie™ 14mm aluminium trimline joint to seal

Flexible underlay

Oblique™ Weatherboard fixed vertically

Hardie™ horizontal cavity batten



Notes:

- The flashing to be placed in the centre of the floor joists. Do not fix cavity battens or cladding into floor joists
- Hardie™ 14mm aluminium trimline joint, take care to ensure continuous seal is formed between panel and the trimline joint
- Trimline horizontal jointer 'L' shaped flashing will be required over the butt joint of the Hardie™ 14mm aluminium trimline joint
- Site cut edges to be primed