

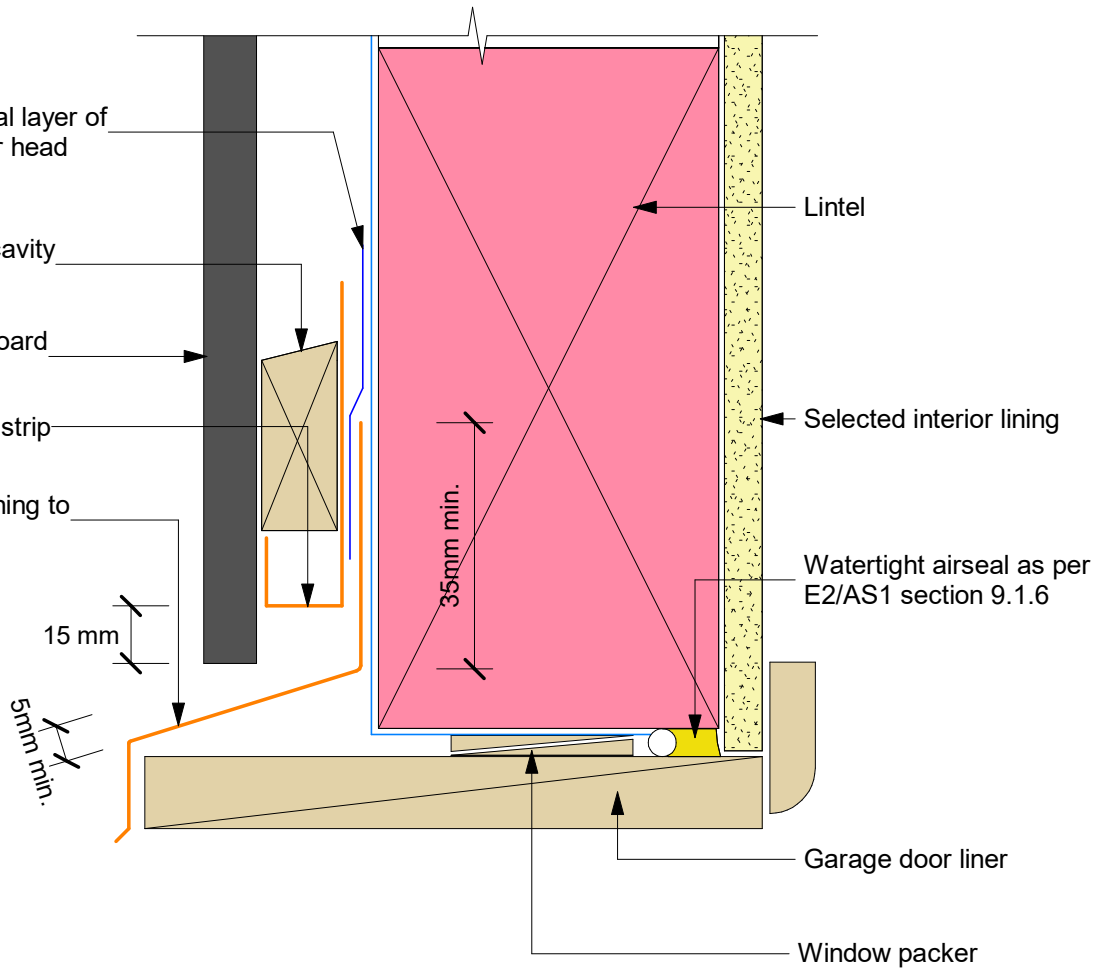
Proprietary tape or alternatively additional layer of flexible underlay over head flashing

Hardie™ horizontal cavity batten

Oblique™ Weatherboard fixed vertically

Hardie™ uPVC vent strip

Aluminium head flashing to min. 15° slope



Note:

- Sealant must be applied between head flashing and liner in VH and EH wind zones and SED wind pressures
- Site cut edges to be primed