

Apply continuous 6mm bead of Bostik Seal n Flex -1 or Sika Sikaflex 11FC adhesive sealant

Stria™ Cladding

Line of head flashing above, extends past scriber min. 10mm

Scriber cut to fit board or alternatively apply flexible sealant in gap

Fix with 75mm jolt head nails fixed at 400mm centres staggered nailing

Trim. Mitre or extend to top of head flashing

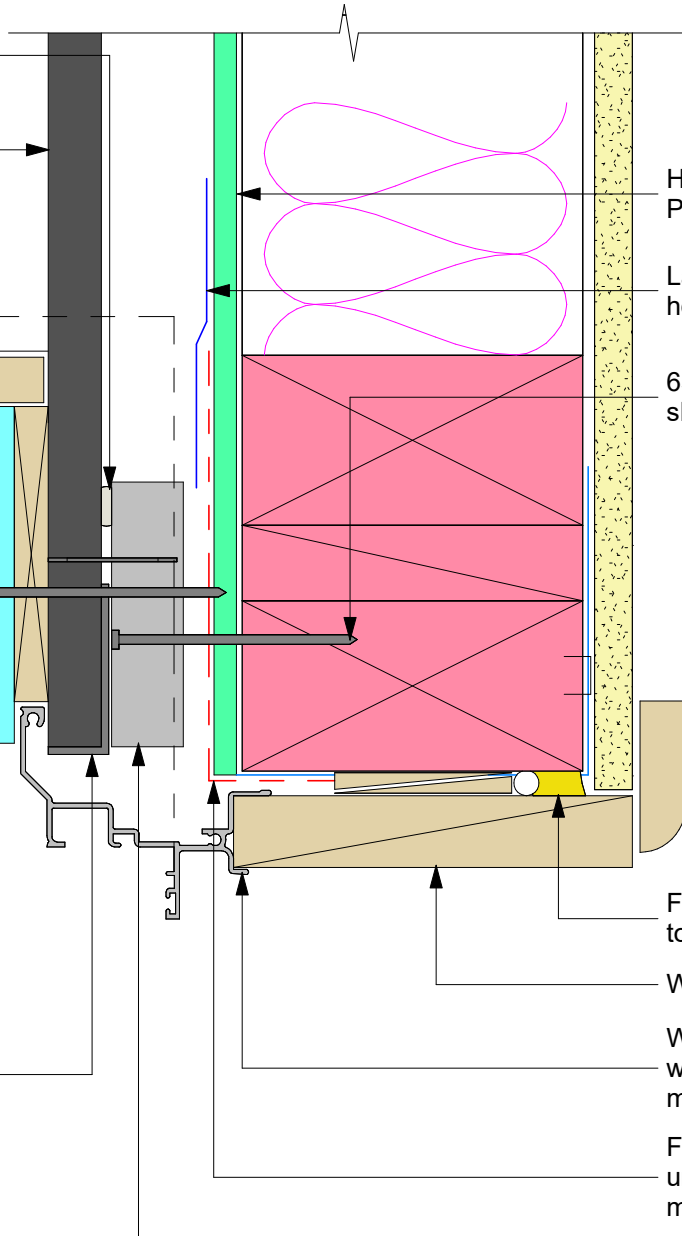
10 mm

Line of planted sill below

Stop end to head flashing behind the cladding or butt the ends against CLD™ Structural Cavity Batten and seal the joint

Hardie™ 14mm Aluminium window jamb flashing to match length of jamb. Apply continuous bead of flexible sealant. Insert into profile gaps flexible sealant to make window edge weathertight

70 x 19mm CLD™ Structural Cavity Batten



HomeRAB™ Pre-Cladding/RAB™ Board

Layer of flashing tape over head flashing

65 x 2.8mm RoundDrive ring shank nails for batten fixing

Flexible sealant over PEF rod to form waterproof airseal

Window liner

Window frame (refer to window manufacturer for method of support and fixing)

Flexible tape over flexible underlay as per manufacturers requirements

Note:

- When HomeRAB™ Pre-Cladding/RAB™ Board is used flashing tape to be applied to the entire window opening
- Site cut edges to be primed

jhl\_stri\_r\_024

jhl\_stri.rvt

June 2024  
Scale: 1 : 2