

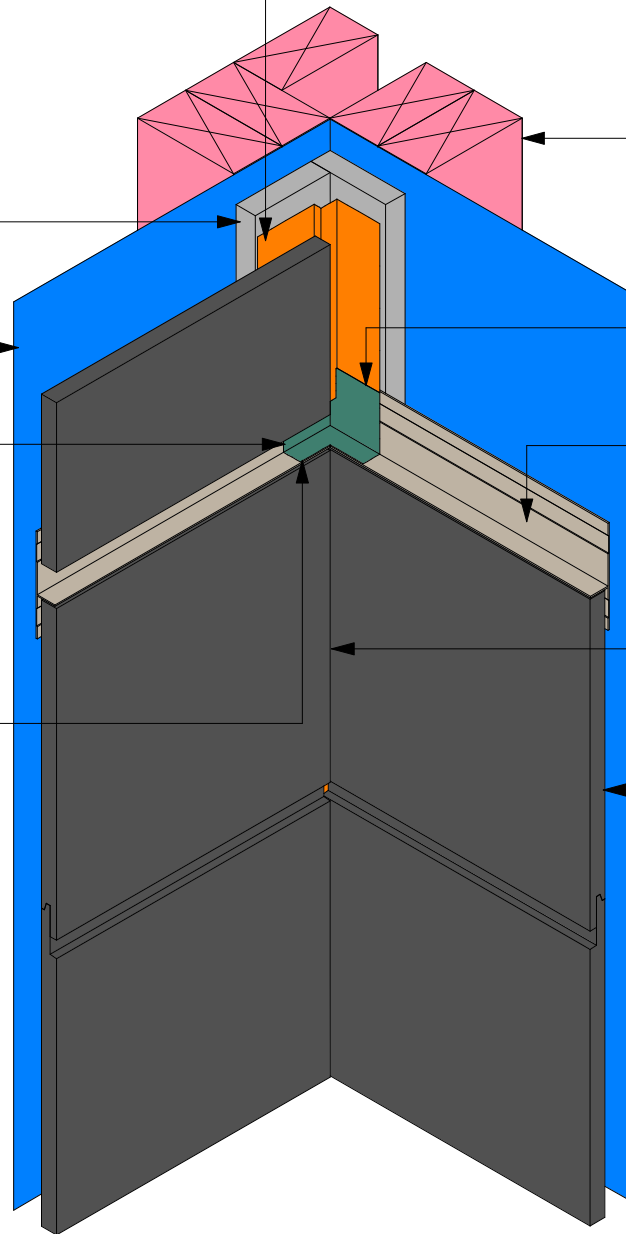
Hardie™ 14mm Aluminium  
Internal Corner mould

70x19 CLD™ Structural  
Cavity Battens

Flexible underlay

Trimline internal corner  
jointer

Apply two 6mm thick lines  
of adhesive sealant on  
the bottom portion of the  
Hardie™ 14mm aluminium  
trimline joint to seal



Framing

Cut back leg of flashing  
to avoid build up.

Hardie™ 14mm Trimline  
joint flashing

Flexible silicone sealant

Stria™ Cladding to be sealed  
prior to flashing installation